

Suspension Bush Removal & Installation - Individual Model Specific Tools

- A new range of individual suspension bush removal and installation tools
- Designed for use in-situ - on the vehicle
- Each tool is supplied with comprehensive fitting instructions
- Spare parts and consumable parts readily available
- These tools are NOT designed for use with air or electrically operated impact wrenches
- Replacement threaded studs and bearings are available as spare parts kits .
- These tools are designed as stand-alone tools for the application described
 - they are NOT compatible or inter-changeable with the SP 08780000 / 18700000 system

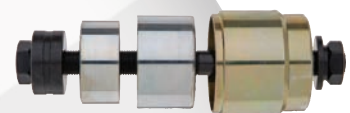
BMW 3 Series (E36 / E46) Rear Trailing Arm Bush Tool 08720100

- For removal and installation of rear trailing arm bushes
- Suitable for both 'original' bushes and new style 'slotted' bushes
- Consumable spares kit : 08720111



BMW 5 & 7 Series (E39 / E38) Rear Ball Joint Tool 08720200

- For removal and installation of rear suspension ball joints on 5 series and 7 series
- Consumable spares kit : 08730111



BMW 5 Series Saloon (E39) Rear Axle Carrier Bush Tool 08720300

- For removal and installation of rear axle carrier bushes on 5 series saloons 1996 on
- Consumable spares kit : 08720311



BMW X5 Series (E53) Rear Axle Carrier Bush Tool 08720400

- For removal and installation of rear axle carrier mounting bushes X5 (E53) models
- Consumable spares kit : 08720311



BMW 5 Series Touring (E39) & 7 Series (E38) 08720500

- For removal and replacement of rear axle carrier bushes as used on BMW 5 series Touring models (E39) and 7 Series (E38) without the need to remove the rear sub-frame assembly.
- Consumable spares kit : 08720511



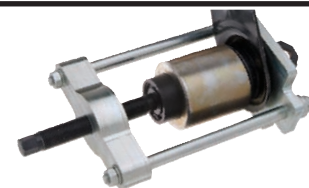
Ford Mondeo Rear Sub-Frame Bush Tool 0873010

- For removal and installation of rear sub-frame bushes on Ford Mondeo 2001MY (10/2000) onwards
- Consumable spares kit : 08730111



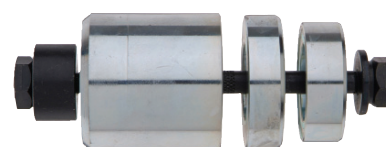
Ford Focus Rear Wishbone Bush Tool 08730200

- For removal and installation of rear wishbone / trailing arm bush on all Ford Focus models 1998 onwards
- Consumable spares kit : 08730211



Ford Fiesta 08730300

- For removal and installation of rear axle mounting bushes as used on Ford Fiesta Ford Ka, Ford Puma models - 1996 on - without the need to remove the trailing link assembly from the vehicle.
- Consumable spares kit : 08730311

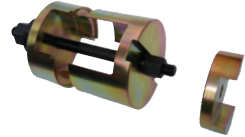


Suspension Bush Removal & Installation - Individual Model Specific Tools

Renault Laguna Rear Suspension Bush Tool

08750100

- For removal and installation of rear axle bushes on Renault Laguna 2 (2001 onwards)
- Consumable spares kit : tba



Vauxhall Vectra B Rear Suspension Bush Tool

08710000

- For removal and installation of rear trailing arm bushes on GM Vauxhall / Opel Vectra B models
- Consumable spares kit : tba



VW / Audi Rear Axle Bush Insertion Tool

08760100

- for the installation of bonded rubber / plastic type rear axle mounting bushes, on Audi A3 / VW Golf 4 / VW Bora - all models 2001 - 2004
- NB - most models were originally fitted with hydraulic type rubber bushes when new - these can be knocked out manually. This tool is required for fitting the new bonded rubber / plastic type replacement bushes. Always replace in pairs.
- Consumable spares kit : 08760111



VW Polo Front Control Arm Bush Tool

08760200

- for removal and installation of the rear bush on the front control arm, as fitted on VW Polo 11/2001 onwards / Seat Cordoba 11/2002 onwards / Skoda Fabia 12/1999 onwards - all models
- Consumable spares kit : 08760211



Universal Suspension Arm Lever

08080000



- For lowering of the suspension arm, and the separation of suspension components
- Reduces the effort required, due to the unique design which uses leverage and the technicians' own bodyweight to create the force required.
- Adjustable, multi-position swing point allows for variable applications - both LH & RH

Product demonstration video available - download a copy from www.sykes-pickavant.com